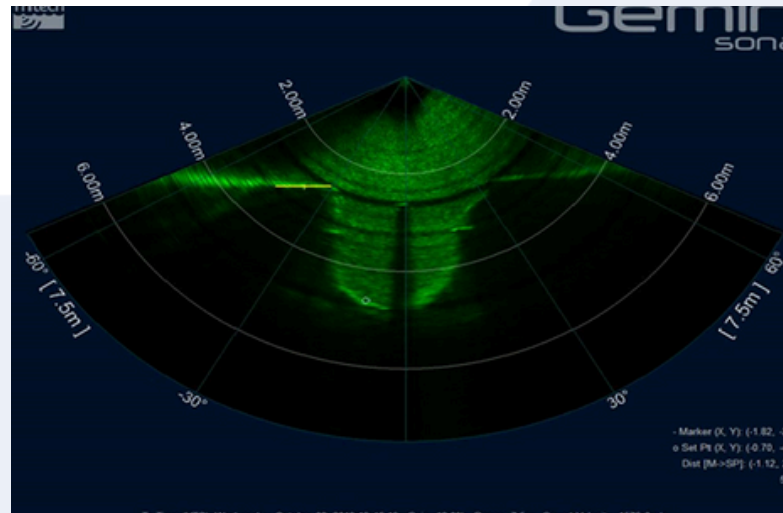


## Cable Burial Ops - Irish Sea



### Project Overview

Orsted contracted Rotech Subsea to deliver cable burial services at an offshore wind farm located in the Irish Sea. The scope included full operational control of the project, from vessel chartering to coordination of all third-party contractors. The aim was to trench two subsea cables (WOW03 and WOW04), totalling approximately 3.5 kilometres in length, to Orsted's burial specifications. These required a target depth of 2.0 metres to top of cable (TOC) in soft sand and 1.0 metre TOC in stiff clay, with water depths ranging from -2.0 to +14.0 metres LAT.



### The Rotech Solution

Rotech Subsea deployed its TRS1-LD (low-draft) controlled flow excavation (CFE) tool, which is equipped with high-power jets and recognised for its superior technical and performance capabilities. The tool and associated spread were mobilised on the offshore support vessel (OSV) Relume and deployed using the vessel's crane. The TRS1-LD was chosen for its ability to deliver effective operations in shallow water scopes.

### Results

The operation was successfully completed with both cables trenched to Orsted's specifications. In soft sand areas, an average trenching speed of 4 metres per minute was achieved, while in stiff clay the tool maintained a steady rate of 2 metres per minute. The project was completed efficiently and to the satisfaction of the client.

### Project Information

**Client:** Orsted

**Scope:** Cable Burial

**Water Depth:** 2m - 14m LAT

**Soils:** Soft Sands to Stiff Clays

**Vessel:** OSV Relume

